



Thomas York House

Woolwich High Street | Woolwich | London | SE18 6EA

Guide price £560,000

idyll.

Key features

- Riverside Apartment in a Sought-After Area
- River Views
- 7th Floor
- c800 sq ft
- Two Bedrooms / Two Bathrooms
- Two Balconies
- New Flooring with Underfloor Heating throughout
- On-site Gym, Roof Terrace, Concierge & Guest Lounge
- 5-min walk to Woolwich Elizabeth Line, DLR, Rail, Ferry & Uber Boat

Description

Spacious c800 sqft riverside apartment directly across from London's historic Royal Arsenal development offering stunning river views and a sleek layout, Two-bedrooms, Two-bathrooms, Two-balcony, Gym, Concierge & Rooftop Garden. Close to links to Canary Wharf and the City.

The Space

This 800-square-foot apartment is designed in a straight-line layout to maximise space and offer a smarter and more flexible living environment. It features an open-plan kitchen and living area extending to a set of balconies, two double bedrooms with one ensuite, an elegant bathroom suite, ample storage rooms, and underfloor heating throughout the home.

Surrounded by floor-to-ceiling windows, the living and dining area boasts abundant natural light. These expansive windows not only brighten the room but provide stunning, uninterrupted views of the River Thames.

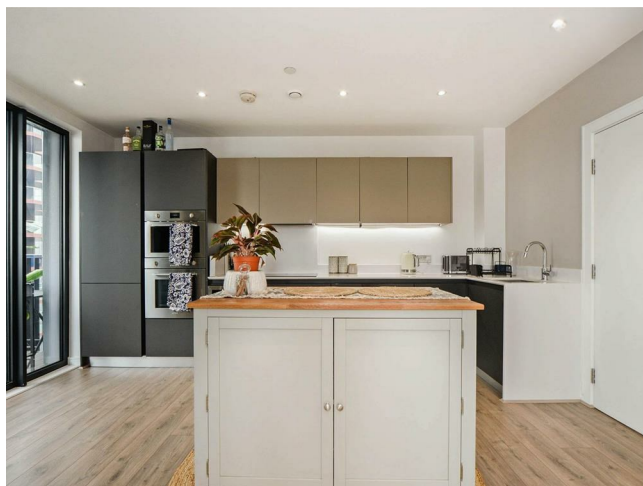
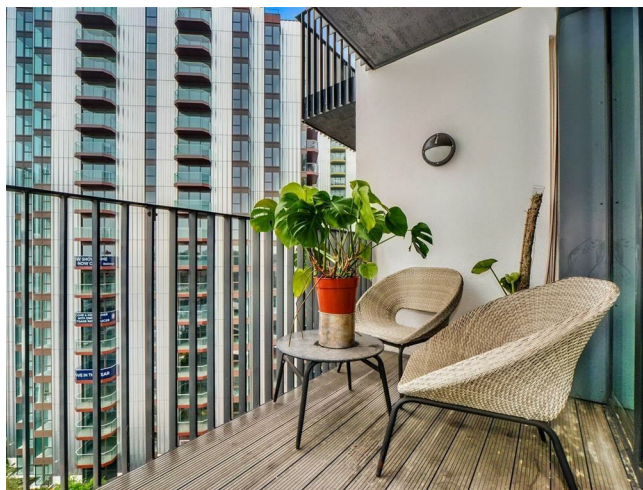
The master and second bedrooms are generously sized with a contemporary Juliette balcony in one room, and a luxury ensuite and built-in wardrobes in the master bedroom. Both bathroom suites are designed with deep grey porcelain floor and wall tiles, fitted with high-end sanctuary ware, creating a spa-like ambience.

An adjacent storage cupboard and utility room with a washer/dryer machine are conveniently positioned in the hallway, flowing into the living area and bedrooms.

Thomas York House offers a range of exceptional on-site amenities, including a gym, rooftop garden, bike storage, concierge, and a guest lounge for residents.

The Area

Woolwich is a vibrant area brimming with high-street shops, bars, cafes, restaurants, and street markets, including galleries, studios, and community spaces events, festivals, and performances, which bring residents together and contribute to the area's cultural identity and rich history.

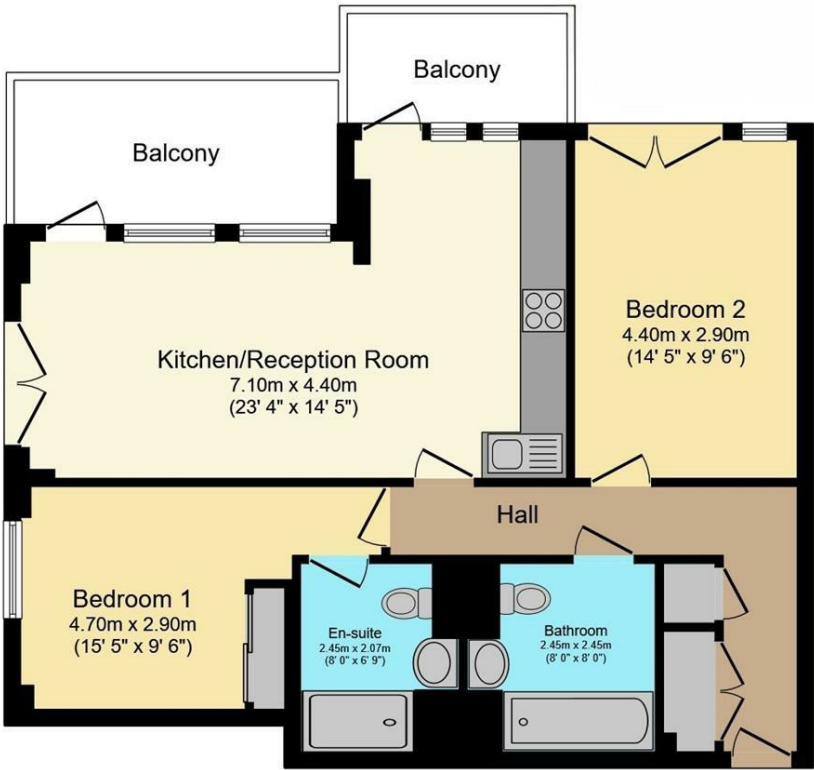


Directions

A 5-minute walk from Woolwich Elizabeth Line, National Rail, DLR, Ferry and Uber Boat services, you'll have easy access to Canary Wharf and the City, including local shops and amenities.

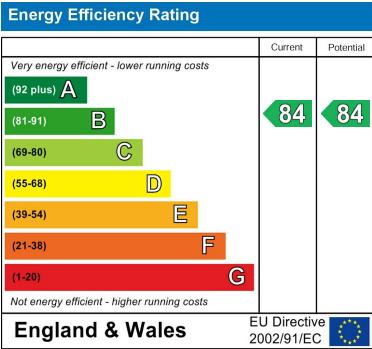


Floor plans



Total floor area 85.5 sq.m. (920 sq.ft.) approx

This floor plan is for illustrative purposes only. It is not drawn to scale. Any measurements, floor areas (including any total floor area), openings and orientation are approximate. No details are guaranteed, they cannot be relied upon for any purpose and they do not form part of any agreement. No liability is taken for any error, omission or misstatement. A party must rely upon its own inspection(s). Powered by www.focalagent.com



idyll.

Iris Court, 16 Thames Reach
London
SE28 0FR
0203 576 5089
sales@theidyll.co.uk
theidyll.co.uk